

THIS DOCUMENT CONTAINS DATA PROPRIETARY TO PROJECTS UNLIMITED, INC. ANY USE OR REPRODUCTION, IN ANY FORM, WITHOUT PRIOR WRITTEN PERMISSION OF PROJECTS UNLIMITED, INC. IS PROHIBITED.
 ©2005, Projects Unlimited Inc.

SPECIFICATIONS

PARAMETERS	VALUES	UNITS
RATED VOLTAGE	220	Vac
OPERATING VOLTAGE RANGE	110 ~ 220	Vac 50/60 Hz
TONE OUTPUT	SEE 32 TONE CHART	—
RATED CURRENT	SEE 32 TONE CHART	mA
INGRESS PROTECTION	IP54	—
COLOR	WHITE	—
OPERATING TEMPERATURE	-25 ~ +70	°C
HOUSING MATERIAL	ABS	—
TERMINAL MATERIAL	SCREW	—
WEIGHT	282	grams

REVISIONS			
LTR	DESCRIPTION	DATE	APPROVED
—	RELEASED FROM ENGINEERING	12/8/05	
A	ADDED BASE & RoHS NOTES	5/18/07	R.W.
B	REVISED DETAIL "A" DIL SWITCH	3/11/09	B.R.

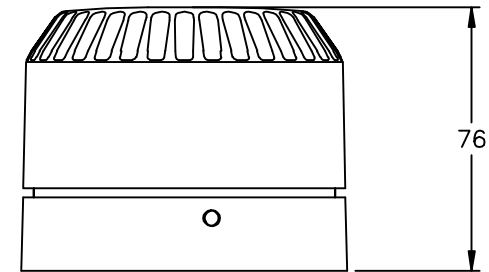
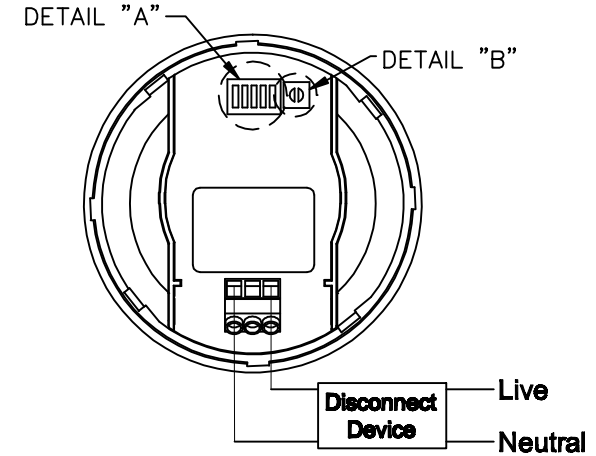
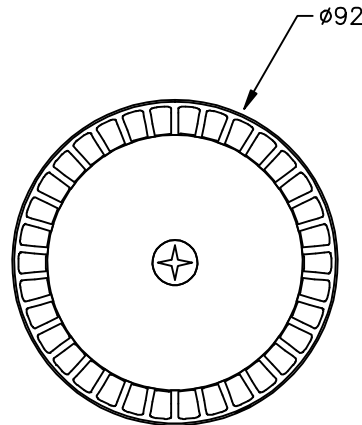
DETAIL "A"

1=CLOSED
0=OPEN

DETAIL "B"

VOLUME CONTROL

MAX



OPTIONAL BASES
 DEEP BASE: AWA-DBW
 U BASE: AWA-UBW
 120Vac BASE: AWA-DBW-120

NOTES:

1. ALL DIMENSIONS ARE IN MILLIMETERS.
2. SPECIFICATION SUBJECT TO CHANGE OR WITHDRAWAL WITHOUT NOTICE.
3. THIS PART IS RoHS 2002/95/EC COMPLIANT.
4. IP65 WITH USE OF AWA-DBW, AWA-DBW-120, OR AWA-UBW BASE.

FILE NAME
 AW-15SBW-120.DWG

UNLESS OTHERWISE SPECIFIED: DIMENSIONS ARE IN MILLIMETERS, TOLERANCES ARE ±0.5 AND ANGLES ARE ±3°.		projects® unlimited Dayton, Ohio	
APPROVALS		DATE	
DRAWN J.A.F.		12/05	
CHECKED E.P.		12/05	
APPROVED B.R.		12/05	
SIREN		SIZE A	DRAWING NO. AW-15SBW-120
DO NOT SCALE DRAWING		SCALE: N.T.S.	SHEET 1 OF 1