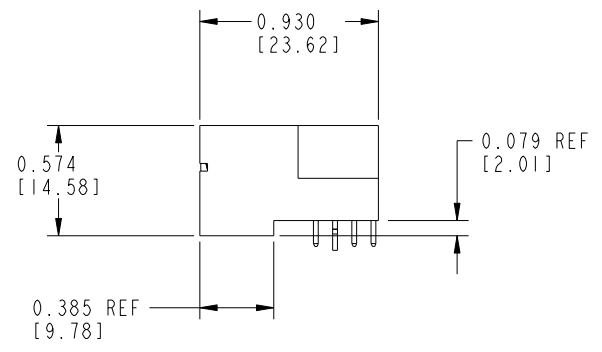
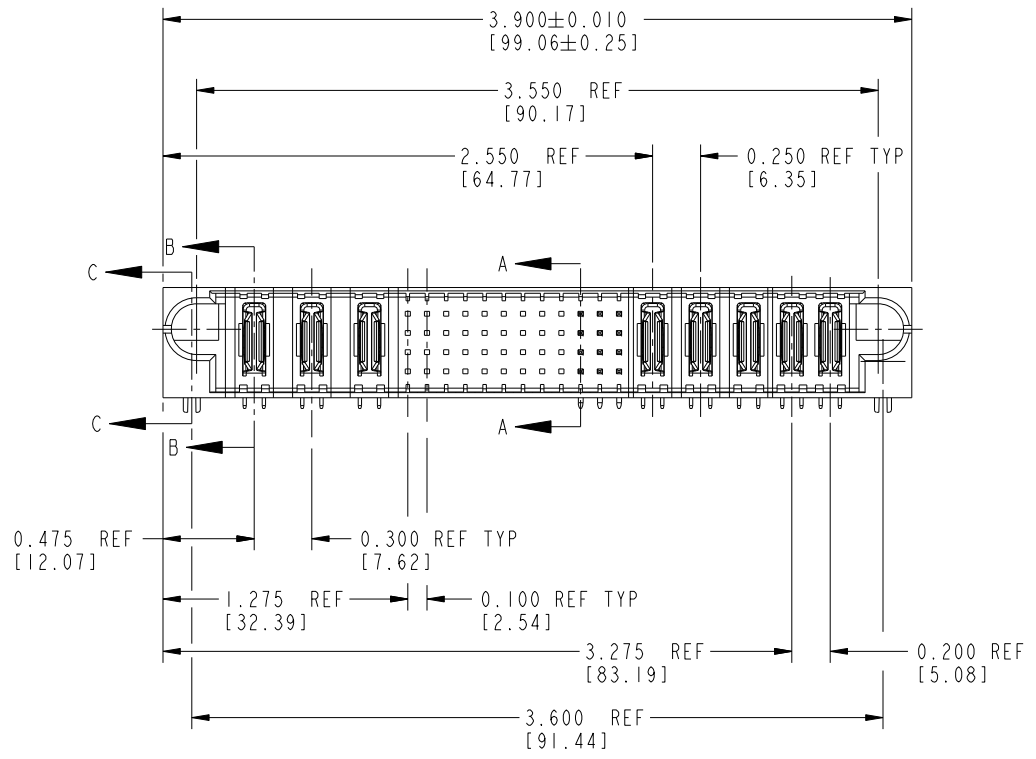
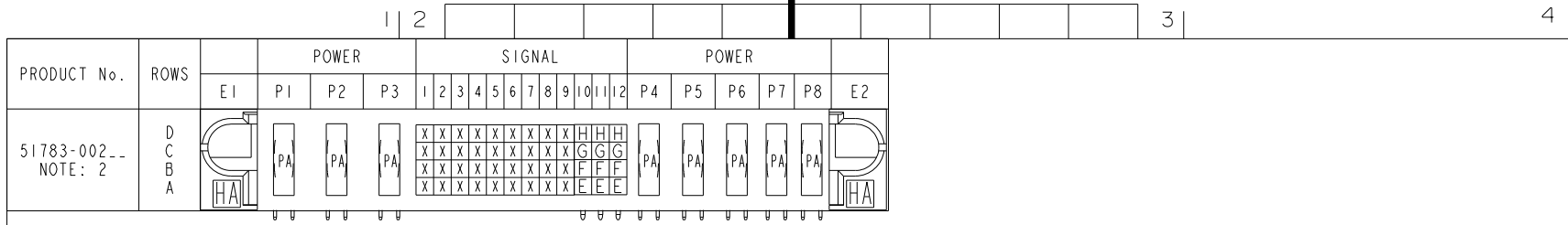


Tous droits strictement réservés. Reproduction ou communication a des tiers interdite sous quelque forme que ce soit sans autorisation écrite du propriétaire. Propriété de c FCI. Droits de reproduction FCI.



All rights strictly reserved. Reproduction or issue to third parties in any form whatever is not permitted without written authority from the proprietor. Property of FCI. Copyright FCI.



CODE	DIM "M" ±0.10 [0.25]	CONTACT TYPE
E	0.220 [5.59]	SIGNAL
F	0.220 [5.59]	SIGNAL
G	0.220 [5.59]	SIGNAL
H	0.220 [5.59]	SIGNAL
PA	N/A [N/A]	POWER
HA	N/A [N/A]	HOLD-DOWN
X	OMITTED	OMITTED

mat'l code				SEE NOTE 1		tolerances unless otherwise specified		CUSTOMER COPY	
ltr	ecn no.	dr	date	linear	.XX±.01/.X±.3	projection	www.fciconnect.com		
A	V12259	JRW	9/26/01		.XXX±.005/.X±.13		title 3ACP + 48S + 5P		
B	V12873	DAI	01/02/01	angles	.XXX±.0020/.XXX±.051		RIGHT ANGLE SOLDER HEADER		
C	DG05-0240	GuoJM	07/26/05		0°±2°	INCH / MM	product family PwrBlade	code 213	
D	DG05-0572	JMG	01/05/06	dr	J. WITMER 9/26/01	scale 1:1	size 51783-002	SHEET 1 OF 3	
E	DG08-0272	WD	09/28/08	enrg	J. ALLISON 9/26/01				
				chr	J. ALLISON 9/26/01				
				appd	J. ALLISON 9/26/01				
sheet index	revision sheet	E 1	E 2	E 3					

form no. 7530-001-103

PDM: Rev: E

STAT: Released

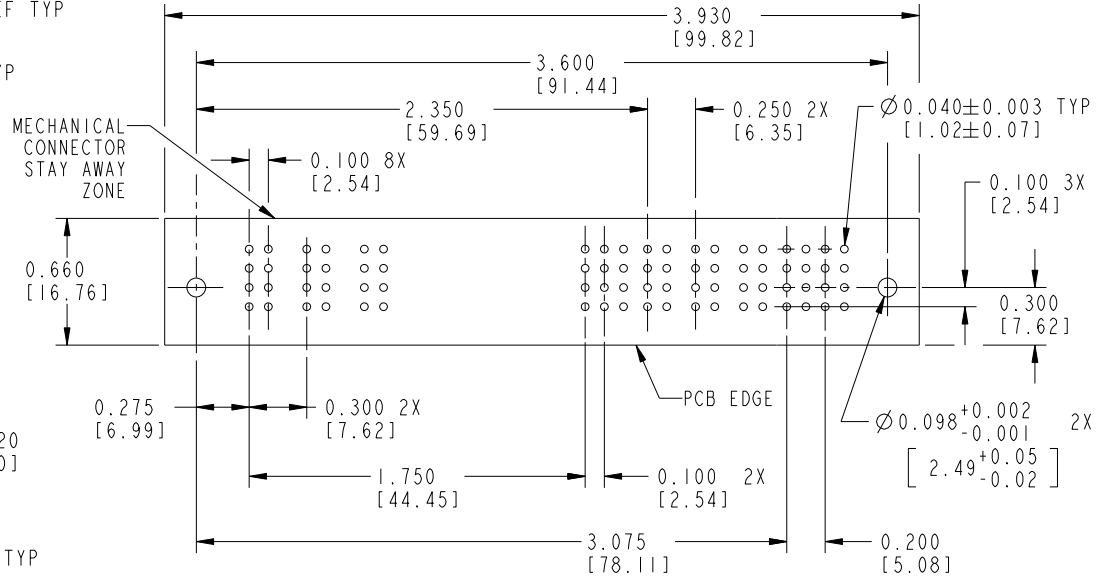
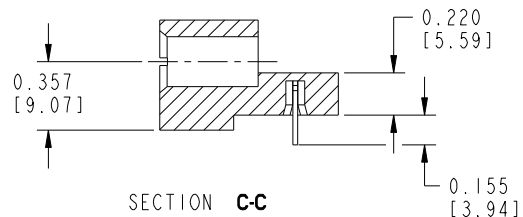
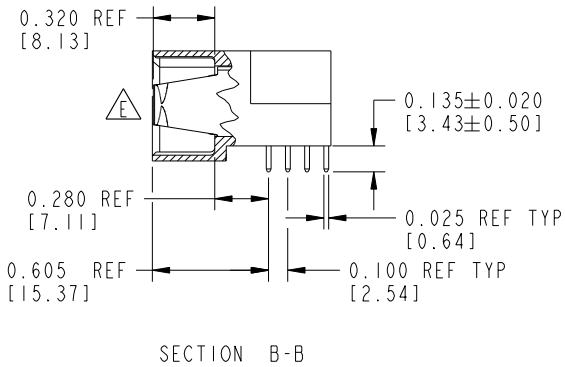
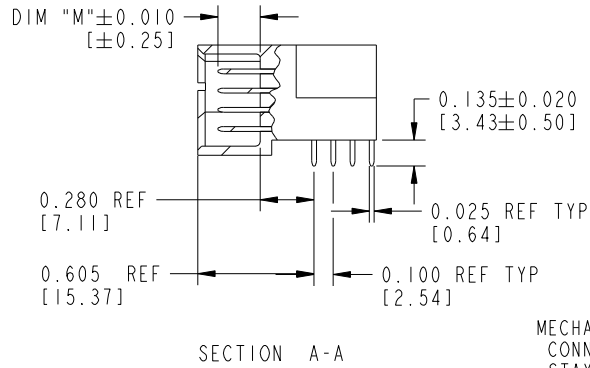
Printed: Dec 20, 2010

Tous droits strictement réservés. Reproduction ou communication a des tiers interdite sous quelque forme que ce soit sans autorisation écrite du propriétaire. Propriété de c FCI. Droits de reproduction FCI.



All rights strictly reserved. Reproduction or issue to third parties in any form whatever is not permitted without written authority from the proprietor. Property of FCI. Copyright FCI.

PRODUCT NUMBER
51783-002__
NOTE: 2



RECOMMENDED PCB LAYOUT

mat'l code		SEE NOTE 1		tolerances unless otherwise specified		CUSTOMER COPY		 www.fciconnect.com	
ltr	ecn no.	dr	date	linear	.XX±.01/.X±.3	 projection	title		
E					.XXX±.005/.X±.13		3ACP + 48S + 5P		
				angles	.XXX±.0020/.XXX±.051		RIGHT ANGLE SOLDER HEADER		
				dr	0°±2°	 INCH / MM	product family		code
				enrg	J. WITMER 9/26/01		PwrBlade		213
				chr	J. ALLISON 9/26/01		size	dwg no	SHEET
				appd	J. ALLISON 9/26/01		A	51783-002	2
sheet index	revision sheet					scale	1:1		

Tous droits strictement réservés. Reproduction ou communication a des tiers interdite sous quelque forme que ce soit sans autorisation écrite du propriétaire. Propriété de c FCI. Droits de reproduction FCI.



All rights strictly reserved. Reproduction or issue to third parties in any form whatever is not permitted without written authority from the proprietor. Property of FCI. Copyright FCI.

1 | 2 | | | | | | | | | | 3 |

4

PRODUCT NUMBER
51783-002__
NOTE: 2

CONNECTOR NOTES:

- HOUSING MATERIAL: UL 94 V-0 GLASS FILLED HIGH TEMP THERMOPLASTIC
POWER CONTACT MATERIAL: COPPER ALLOY
SIGNAL CONTACT MATERIAL: COPPER ALLOY
- 51783-002;51783-002LF;51783-002GLF PLATING SPEC. SEE PRINT:10064183
- "MANUFACTURER'S" NAME, P/N, AND DATE CODE TO APPEAR ON THIS SURFACE
- PRODUCT SPECIFICATION GS-12-149

PCB NOTES:

- ALL DIMENSIONS ARE BASIC UNLESS OTHERWISE SPECIFIED.
- ALL THROUGH HOLES ARE LOCATED WITH A TRUE POSITION OF 0.004 [0.10]
- ALL HOLE DIAMETERS ARE FINISHED HOLE SIZE
- Ø0.126[3.20] THROUGH HOLES ARE UNPLATED.
- Ø0.0453±0.0010 [1.151±0.025] DRILLED HOLES PLATED WITH 0.0003 [0.008] MIN SnPb OVER 0.001 [0.03] TO 0.003 [0.08] Cu PLATING TO ACHIEVE A Ø0.040±0.003 [1.02±0.07] HOLE.
- A SYMBOL WILL BE NEXT TO ANY DIMENSION, VIEW, OR NOTE WHICH HAS BEEN MODIFIED WITH THE CURRENT DRAWING REVISION.

A

A

B

B

mat'l code		SEE NOTES		tolerances unless otherwise specified		CUSTOMER		 www.fciconnect.com	
ltr	ecn no.	dr	date	linear	.XX±.01/.X±.3		projection	COPY	
E					.XXX±.005/.XX±.13				title
				angles	.XXX±.0020/.XXX±.051		3ACP + 48S + 5P		
					0°±2°				RIGHT ANGLE SOLDER HEADER
				dr	J. WITMER	9/26/01	INCH / MM scale 1:1	product family	
				enr	J. BROWN	05-07-00		PwrBlade	
				chr	J. ALLISON	9/26/01		size	dwg no
				appd	J. ALLISON	9/26/01		A	51783-002
sheet index		revision sheet						code	213
								sheet	3