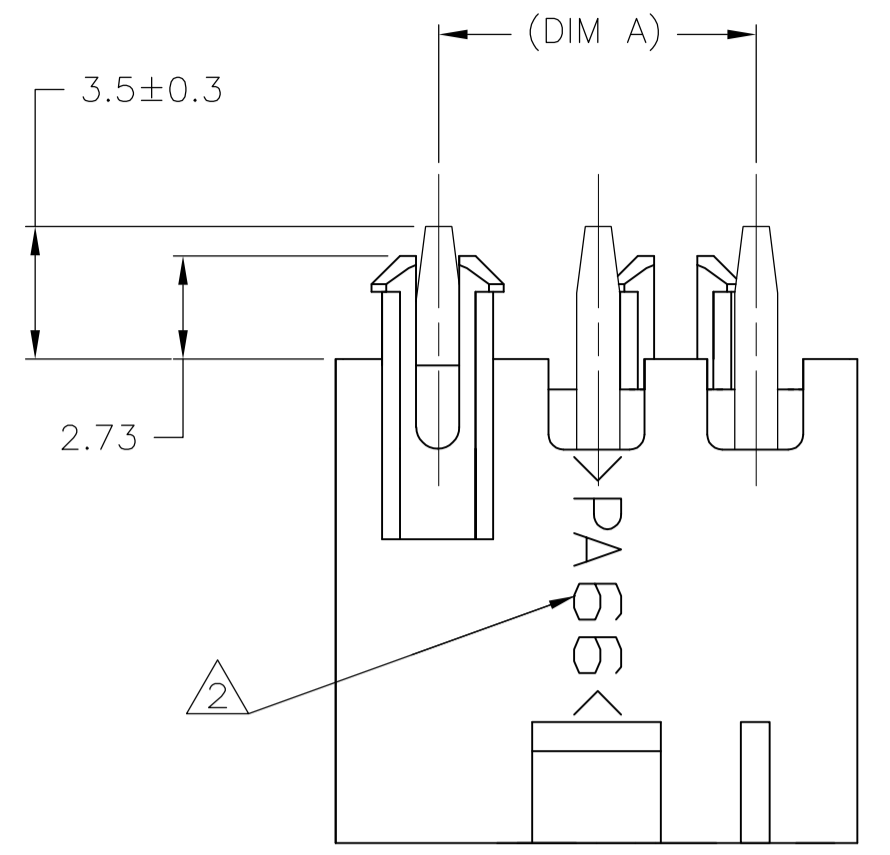
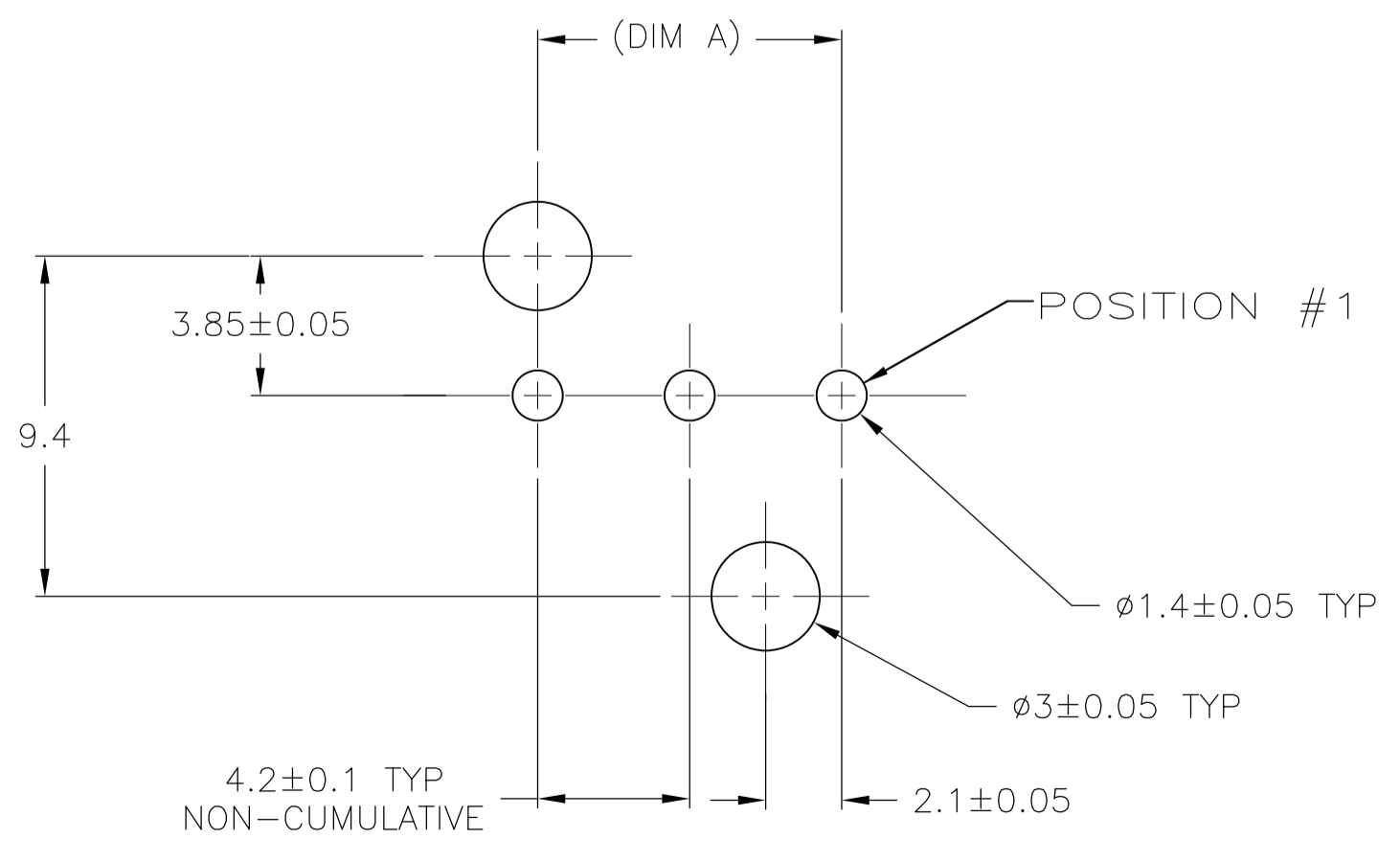
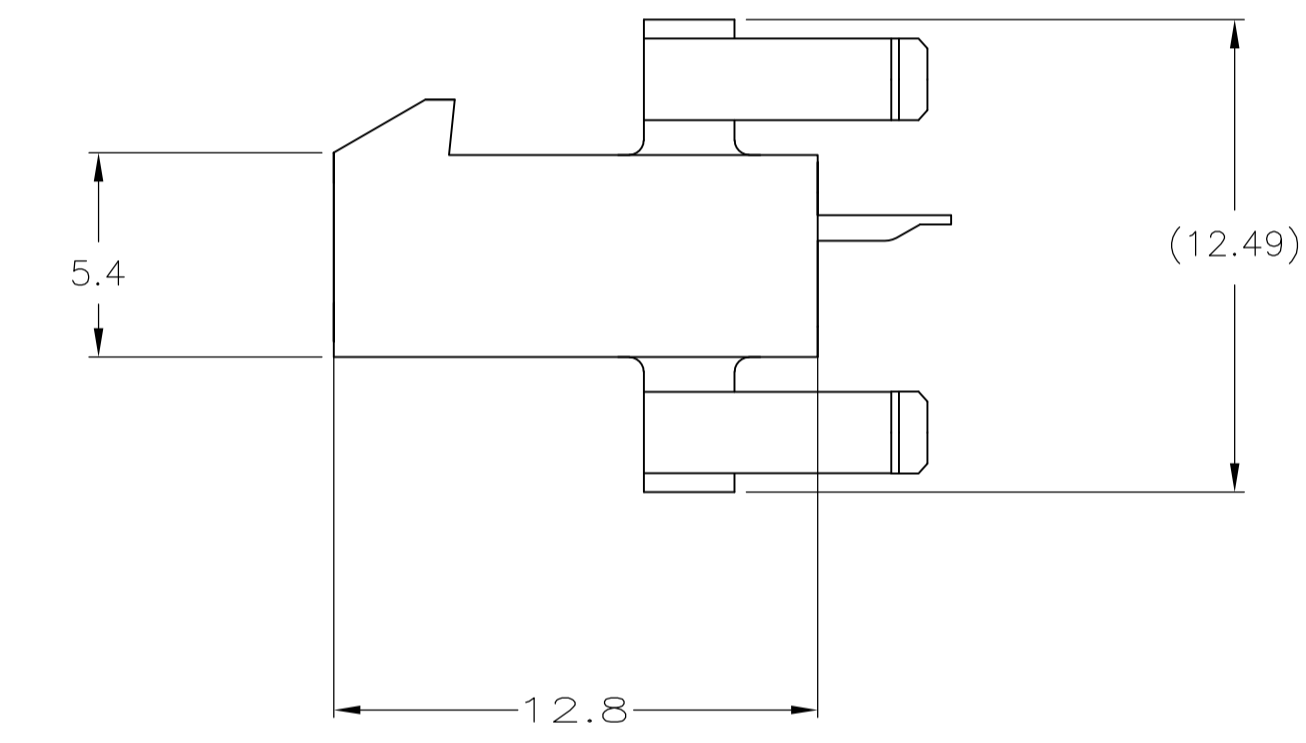
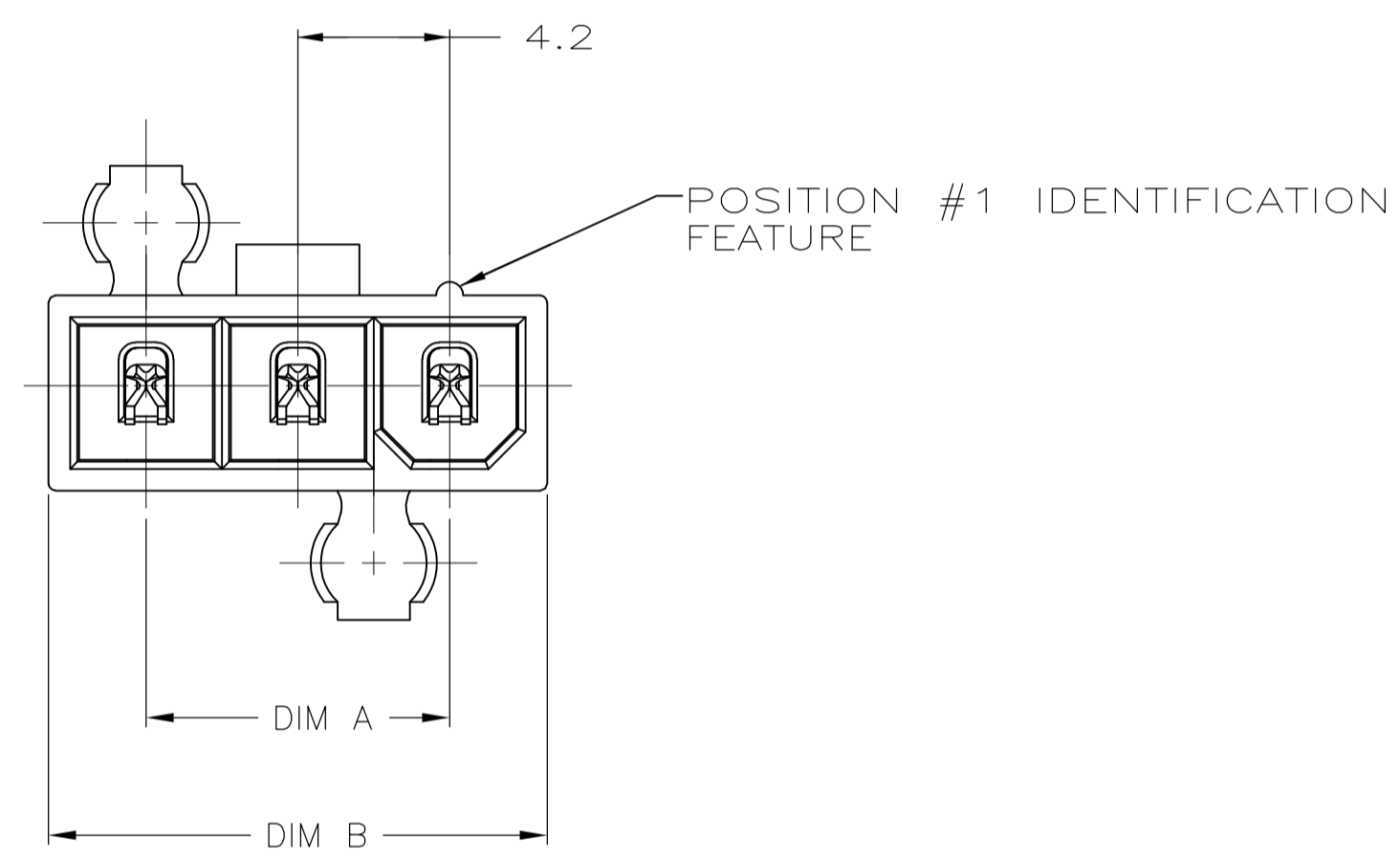


| LOC | | DIST | | REVISIONS | | | |
|-----|-----|-----------------------|-----------|-----------|------|--|--|
| P | LTR | DESCRIPTION | DATE | DMN | APVD | | |
| A | | WR-08-45 | 23SEP2008 | KW | CC | | |
| B | | REVISED ECR-14-015945 | 28OCT2014 | A.Z | D.Z | | |

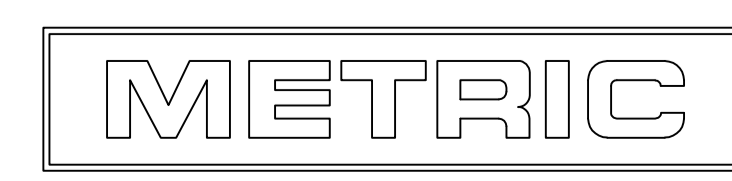


- ⚠ MATERIAL: HOUSING - NYLON 66 GF20, UL94V-0, NATURAL.
CONTACTS - BRASS, TIN PLATED.
- ⚠ TYCO ELECTRONICS LOGO AND MATERIAL ID MAY BE LOCATED ON EITHER LONG SIDE OF PART.
- 3. GLOW WIRE APPROVED, CONTACT TYCO ELECTRONICS ENGINEERING FOR SPECIFICATION.



| | | | |
|-------|-------|------------------|-----------|
| 22.2 | 16.8 | 5 | 2029181-5 |
| 18 | 12.6 | 4 | 2029181-4 |
| 13.8 | 8.4 | 3 | 2029181-3 |
| DIM B | DIM A | NO. OF POSITIONS | PART NO |

RECOMMENDED MOUNTING HOLE PATTERN FOR 1.78 MAX THICK P.C. BOARD COMPONENT SIDE SHOWN



THIS DRAWING IS A CONTROLLED DOCUMENT.

| | | | | | |
|----------------|--|---------------------------|------------------------|---|--------------------|
| DIMENSIONS: mm | TOLERANCES UNLESS OTHERWISE SPECIFIED: | DIN K. WHITAKER 23SEP2008 | APVD C. CASH 23SEP2008 | NAME | TE Connectivity |
| 0. PLC ± - | 1. PLC ± 0.2 | CHK C. CASH 23SEP2008 | PRODUCT SPEC | PLUG ASSEMBLY, VERTICAL, SINGLE ROW, W/O DRAIN HOLES, VAL-U-LOK(TM) | RESTRICTED TO |
| 2. PLC ± 0.13 | 3. PLC ± - | APVD C. CASH 23SEP2008 | APPLICATION SPEC | 108-2112 | |
| 4. PLC ± - | ANGLES ± 0°30' | SIZE | 114-13172 | A1 | |
| MATERIAL | FINISH | WEIGHT | 00779 | 2029181 | |
| | | | CUSTOMER DRAWING | SCALE N/A | SHEET 1 OF 1 REV B |